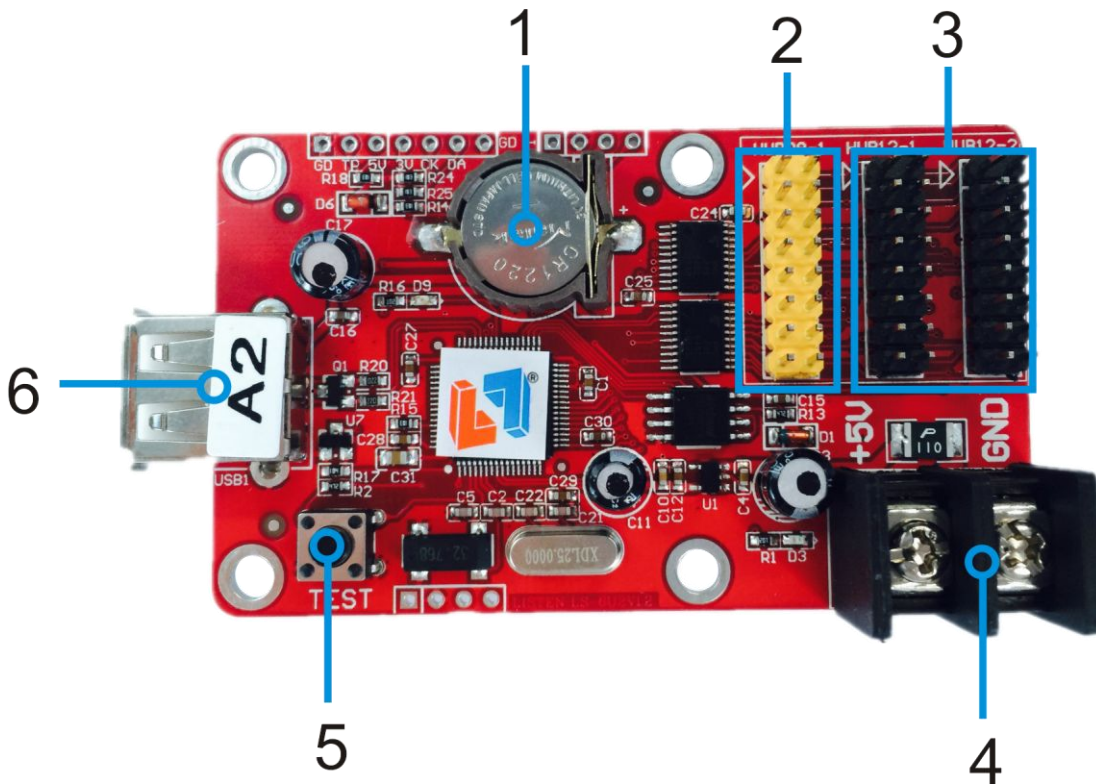


Specification for A2 LED Display Controller

Version	Date
V2.00	2015/08/07

Hardware:



Item	Interface Name	Description
1	RTC Button battery	RTC battery , Voltage 3V
2	HUB08 Port	Connect to modules with HUB08 port
3	HUB12 Port	Connect to modules with HUB012 port
4	5V Power supply	Voltage range support 3.5V-6V
5	Multi-function button	1.Test LED panel 2.Reset to defaults
6	USB Port	USB Port

Parameter:

Memory	2MByte
Suitable for	All kinds of single/double color led modules
Pixels	Single color 16K;Double color 8K
Support Range	Single color:1024*16 512*32 Double color:512*16 256*32
Software Function	Multi-area display/More language
Program number	128 programs, 16 area for each program
Area type	Text,Graphic,Animation,Time, Clock,Timer,Temperature
Frame display	Program Water frame/Area Water frame
Clock display	Digital clock,Analog clock,Positive timing,Negative timing
Communication port	USB port
Display Port	1XHUB08 2XHUB12
Sensor	Temperature Sensor
Brightness Adjustment	16 grade, auto brightness adjustment/ adjust by software
Remote Switch	Support timing turn on/off , Turn on/off by software
Working Voltage	3.5V~6V
Max Power	<1W
Working Temperature	-40℃-85℃
Secondary Development	Offer DLL
Software	LED Player 6.0

Dimensional drawing:

